

**FROM MONET TO PICASSO
JEWISH ART COLLECTORS IN GERMANY
11 SEPTEMBER 2026 UNTIL 29 MARCH 2027**

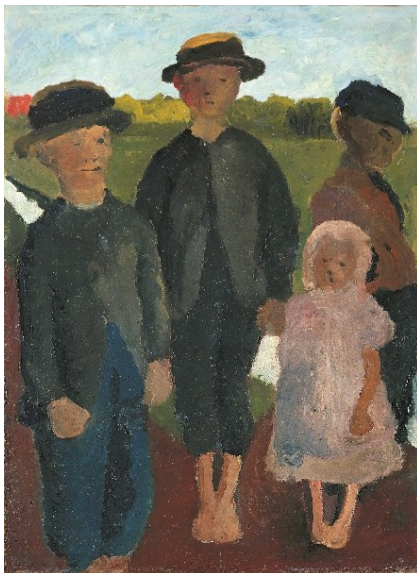
Reproduction of the photos is free of charge. Please note that the use of the footage is permitted only within the current coverage and with the complete copyright information.

CAPTIONS



Ferdinand Hodler, *Lake Thun with Stockhorn Chain*, around 1913, Kunstmuseum St. Gallen, On loan from the Simon and Charlotte Frick Foundation 2011,
© Photo: Stefan Rohner

(Collection Max Silberberg)



Paula Modersohn-Becker, *Four Children in front of a Landscape with a Moor Canal*, around 1900, Kunstsammlungen Chemnitz - Museum Gunzenhauser, Owned by the Gunzenhauser Foundation

© Photo: Archive Museum Gunzenhauser

(Collection Julie und Wilhelm Landmann)

Weitere Presseinformationen und Bildmaterial:

Ineke Rickert, Presse- und Öffentlichkeitsarbeit, Bucerius Kunst Forum,
+49 (0)40 36 09 96 78, presse@buceriuskunstforum.de, buceriuskunstforum.de



Wladimir von Zabolin, *Sunday Morning in Gdańsk*, undated, Kunsthalle Mannheim © Collection Emma Zabolin © Photo: Kunsthalle Mannheim

(Collection Julie und Wilhelm Landmann)



Franz Wilhelm Seiwert, *Discussion*, 1926, Kunstmuseum Bonn © Photo: Reni Hansen - ARTOTHEK

(Collection Martha and Walter Blank)



Claude Monet, *The Lighthouse at Honfleur*, 1864, Kunsthhaus Zürich, Donated by Dr. Adolf Jöhr's heirs (President of the Zurich Society of Art 1922-1940), 1975

(Collection Hugo and Martha Nathan)

Weitere Presseinformationen und Bildmaterial:

Ineke Rickert, Presse- und Öffentlichkeitsarbeit, Bucerius Kunst Forum,
+49 (0)40 36 09 96 78, presse@buceriuskunstforum.de, buceriuskunstforum.de



Paul Cezanne, *Mont Sainte-Victoire Seen from Gardanne*, 1892-95, Collection of the Yokohama Museum of Art

(Collection Hirschland)



Max Pechstein, *The Couple (Interior)*, 1921, Kunstmuseum Bochum

(Collection Clothilde („Tilly“) and Paul Schlüter)



Dr Rosa Schapire, 1919, Karl Schmidt-Rottluff, Tate

© VG Bild-Kunst, Bonn 2026. Photo: Tate

(Collection Rosa Schapire)

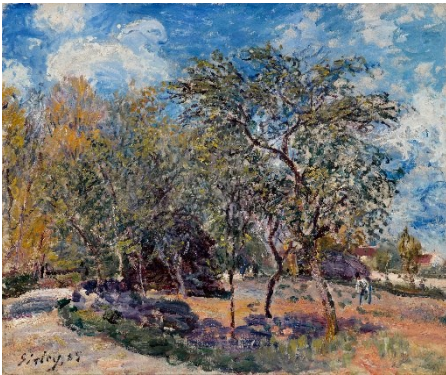
Weitere Presseinformationen und Bildmaterial:

Ineke Rickert, Presse- und Öffentlichkeitsarbeit, Bucerius Kunst Forum,
+49 (0)40 36 09 96 78, presse@buceriuskunstforum.de, buceriuskunstforum.de



Camille Pissarro, *The Pont Neuf*, Paris, 1902,
Musée des Beaux-Arts de Lyon
© Lyon MBA - Photo Alain Basset

(Collection Max Emden)



Alfred Sisley (1839-1899), *An Orchard*, 1885,
Oil on canvas
A.G. Leventis Gallery, Nikosia/Zypern
© A. G. Leventis Gallery, Nicosia

(Collection Alfred Wolf)

Weitere Presseinformationen und Bildmaterial:

Ineke Rickert, Presse- und Öffentlichkeitsarbeit, Bucerius Kunst Forum,
+49 (0)40 36 09 96 78, presse@buceriuskunstforum.de, buceriuskunstforum.de