




# CINDY SHERMAN

## **MEDIA AND MARKETING IMAGES – CONDITIONS OF USE**

Images may be used for marketing use only in relation to the exhibition. Captions must accompany all images reproduced. No images can be overlaid with text or printed in a single colour other than black. Permission must be sought to crop images or bleed off the page.

## **MEDIA INQUIRIES**

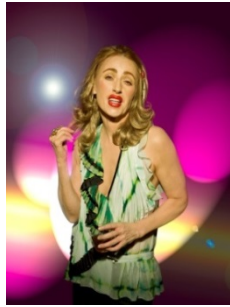
Amelia Gundelach | Media Manager  
 T: (07) 3840 7162  
 E: media@qagoma.qld.gov.au

<b>Section 1: Headshots</b>	
	<p>Cindy Sherman / <i>Untitled #353</i> 2000 / Image courtesy: The artist and Metro Pictures, New York / © The artist</p>
	<p>Cindy Sherman / <i>Untitled #402</i> 2000 / Image courtesy: The artist and Metro Pictures, New York / © The artist</p>
<b>Section 2: Clowns</b>	
	<p>Cindy Sherman / <i>Untitled #414</i> 2003 / Image courtesy: The artist and Metro Pictures, New York / © The artist</p>

**Section 3: Balenciaga**

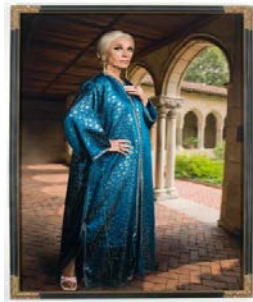


Cindy Sherman / *Untitled #458* 2007-08 / Image courtesy: The artist and Metro Pictures, New York / © The artist



Cindy Sherman / *Untitled #461* 2007-08 / Image courtesy: The artist and Metro Pictures, New York / © The artist

**Section 4: Society Portraits**



Cindy Sherman / *Untitled #466* 2008 / Image courtesy: The artist and Metro Pictures, New York / © The artist

**Section 5: Chanel**



Cindy Sherman / *Untitled #548* 2010/12 / Image courtesy: The artist and Metro Pictures, New York / © The artist